

PART N.E. 1/4, SEC. 13, T.6N., R.2W., S.L.B. & M.
MEYERHOFFER NO. 4

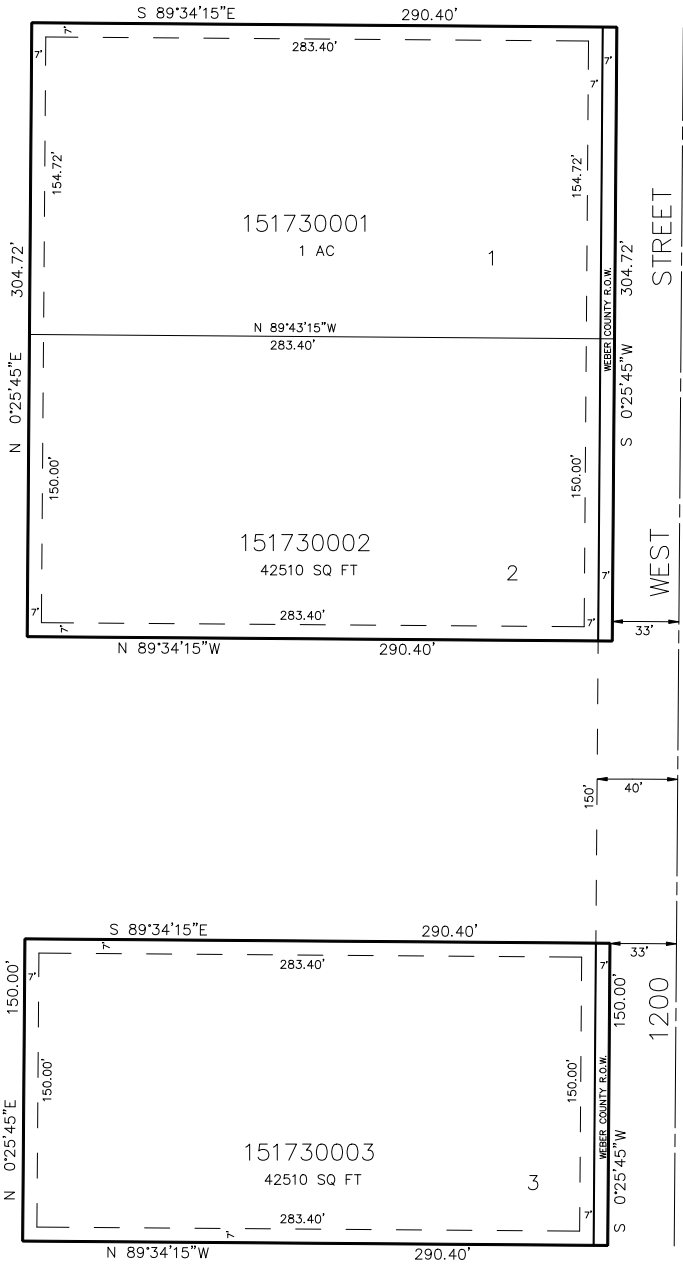
173

IN WEBER COUNTY

TAXING UNIT: 17

SCALE 1"=50'

SEE PAGE 35



SEE PAGE 35

SEE PAGE 35

FOR COMPLETE ENG. DATA SEE
ORIGINAL DEDICATION PLAT IN
BOOK 29, PAGE 9 OF RECORDS.

NOTE: 7' TYPICAL UTILITY EASEMENTS
EACH SIDE OF LOT LINES AS
SHOWN BY DASHED LINES.